



F9000 ON Key manual

Vantage Towers – LSA

ISEO – Service Operation Center






TABLE OF CONTENTS

1	ACOUSTIC AND LUMINOUS SIGNALS OF THE KEY	4
2	CHANGE OF KEY BATTERIES.....	5
3	KEY SYNCHRONISATION	6
3.1	USING THE APP “MYLOCKEN FOR VT”	6
	ANNEX: INFORMATION OF INTEREST.....	7

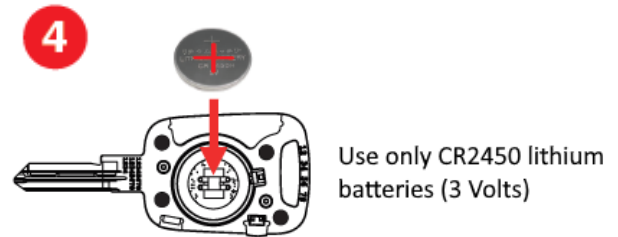
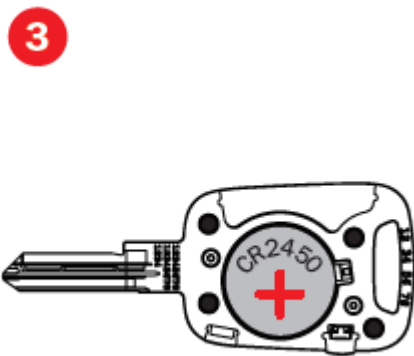
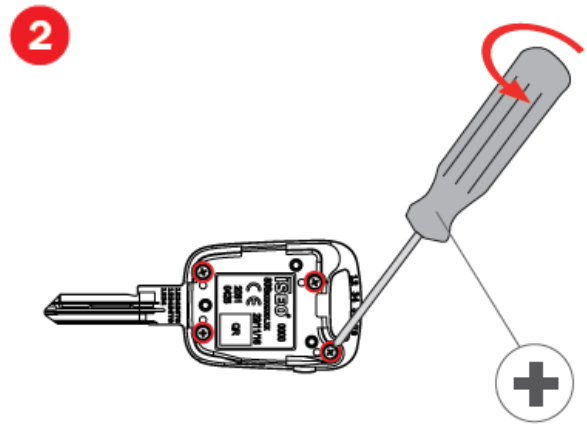
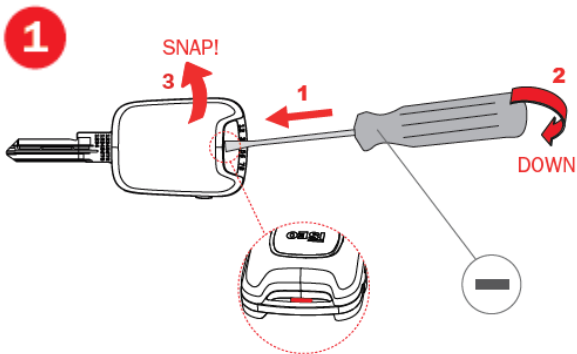
Modifications log			
Index / Version	Author	Date	Description
V.01	MBO	20/06/2023	Initial version
V.02	TCI	10/07/2023	Links updated
V.03	MBO	06/08/2023	Support contact updated
V.04	TCI	06/10/2023	New format
V.05	TCI	08/11/2023	Support contact information updated

1 Acoustic and luminous signals of the key

Find below the list of all the possible events the behaviour of a key can report through its acoustic and luminous signals:

Device	Condition	Light & acoustic signals	Meaning
 User key inserted into F9000 cylinder. 		2x + 1x	Cylinder NOT INITIALIZED. Any key opens.
		7x fast	Key not programmed, REVOKED, ERASED, in Black List or belonging to another plant (reading error/wrong data).
		1x	ACTIVE key: opening successfully.
		3x	Key not enabled to open because: wrong door, NOT YET ACTIVE, EXPIRED, NOT VALIDATED, SUSPENDED, Out of time schedule, Lockout.
		1x	ACTIVE key: opening successfully but Low Battery (battery replacement recommended).
		steady 3 sec	Battery Empty (opening not allowed).
 Programming key inserted into F9000 cylinder. 		flashing 20 sec ... steady ... 3x fast	Upgrade cylinder software (do not remove the key until the end of the upgrade procedure).
		1x ... 3x fast	Initialize Door or Update Door Configuration (do not remove the key until the end of the procedure).
		steady ... 3x fast	Reset Door (do not remove the key until the end of the procedure).
		3x fast	Action performed. For example: cylinder events download or black-list successfully loaded into cylinder.
		7x fast	Key not programmed, FORMATTED or belonging to another plant (reading error/wrong data).
		1x	Low Battery.
		steady 3 sec	Battery empty (key not working).
		F9000 ON Keys Bluetooth switch-on button 	Bluetooth switch-on: press 1 time.
Key battery check: keep pressed the bluetooth switch-on button for 3 sec.	1x		Battery OK.
	1x		Battery LOW (battery replacement recommended).
	1x		Battery Empty (opening not allowed).

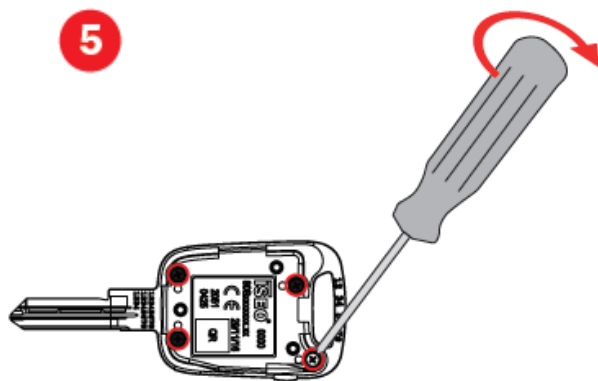
2 Change of key batteries



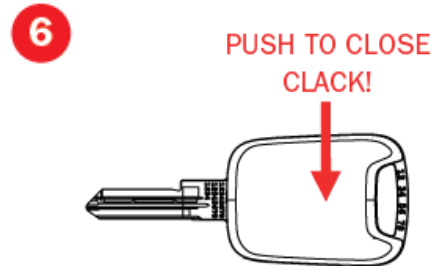
Insert new battery within 3 minutes to avoid loss of internal clock setting.



To restore internal clock setting, please update your key.



When you tighten the screws take care to not break the plastic thread.



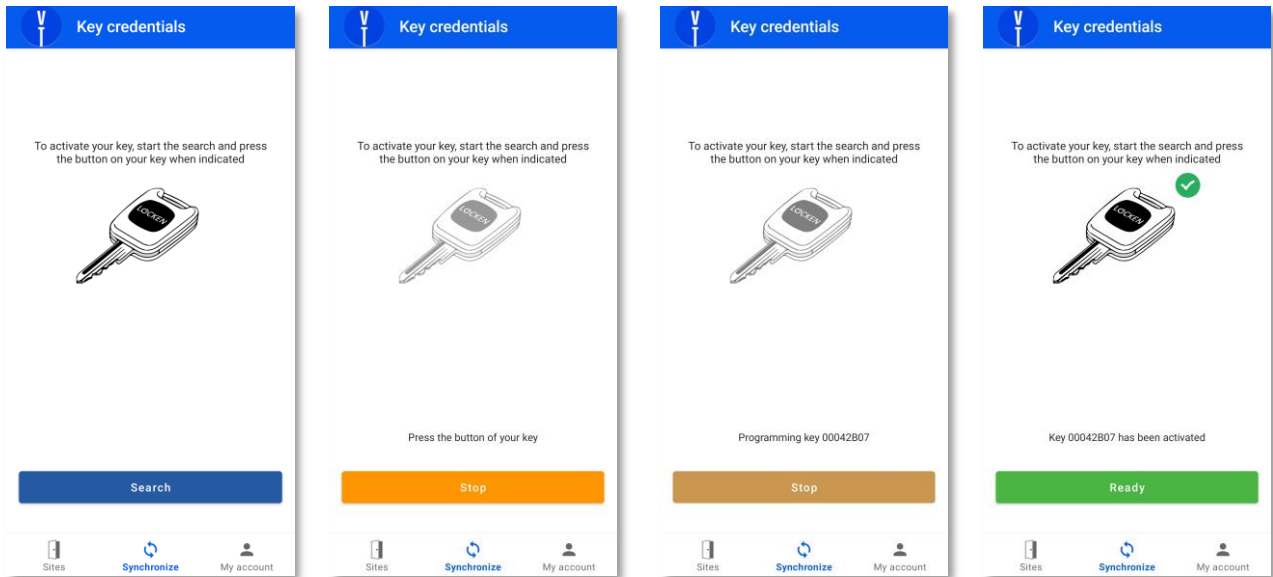
Lithium Battery
CR2450 - 3V

Dispose of batteries according to your local environmental laws and guidelines.

3 Key synchronisation

3.1 Using the App “MyLocken for VT”

To synchronize a key with the app “MyLocken for VT”, you’ll need a smartphone with Bluetooth and localization functionalities activated.



0

ANNEX: Information of Interest

Public Documentation website with updated guides

- [F9000 ON Key Guide EN](#)
- [MyLocken for VT Guide EN](#)

ISEO Support Contact

- [Support Contact Information](#)